

Lemay Avenue

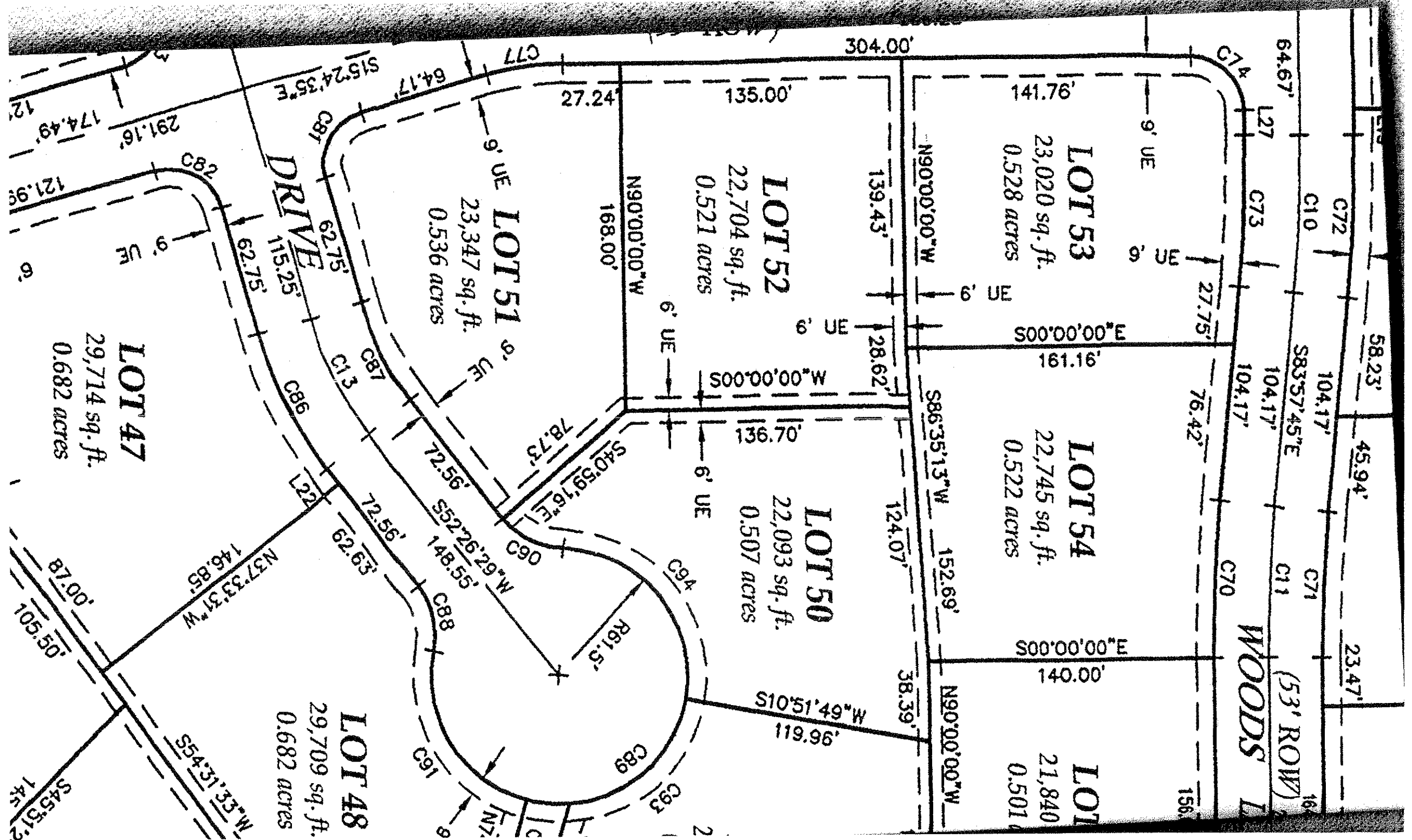
E S T A T E S

LOT 50

PLAT DOCUMENTS

INCLUDE:

- 1) Dimensional Plat
- 2) Grading Plat
- 3) Top Of Foundation Plat
- 4) Curve & Line Table



LOT 53
23,020 sq. ft.
0.528 acres

LOT 54
22,745 sq. ft.
0.522 acres

LOT 55
21,840 sq. ft.
0.501 acres

LOT 52
22,704 sq. ft.
0.521 acres

LOT 50
22,093 sq. ft.
0.507 acres

LOT 51
23,347 sq. ft.
0.536 acres

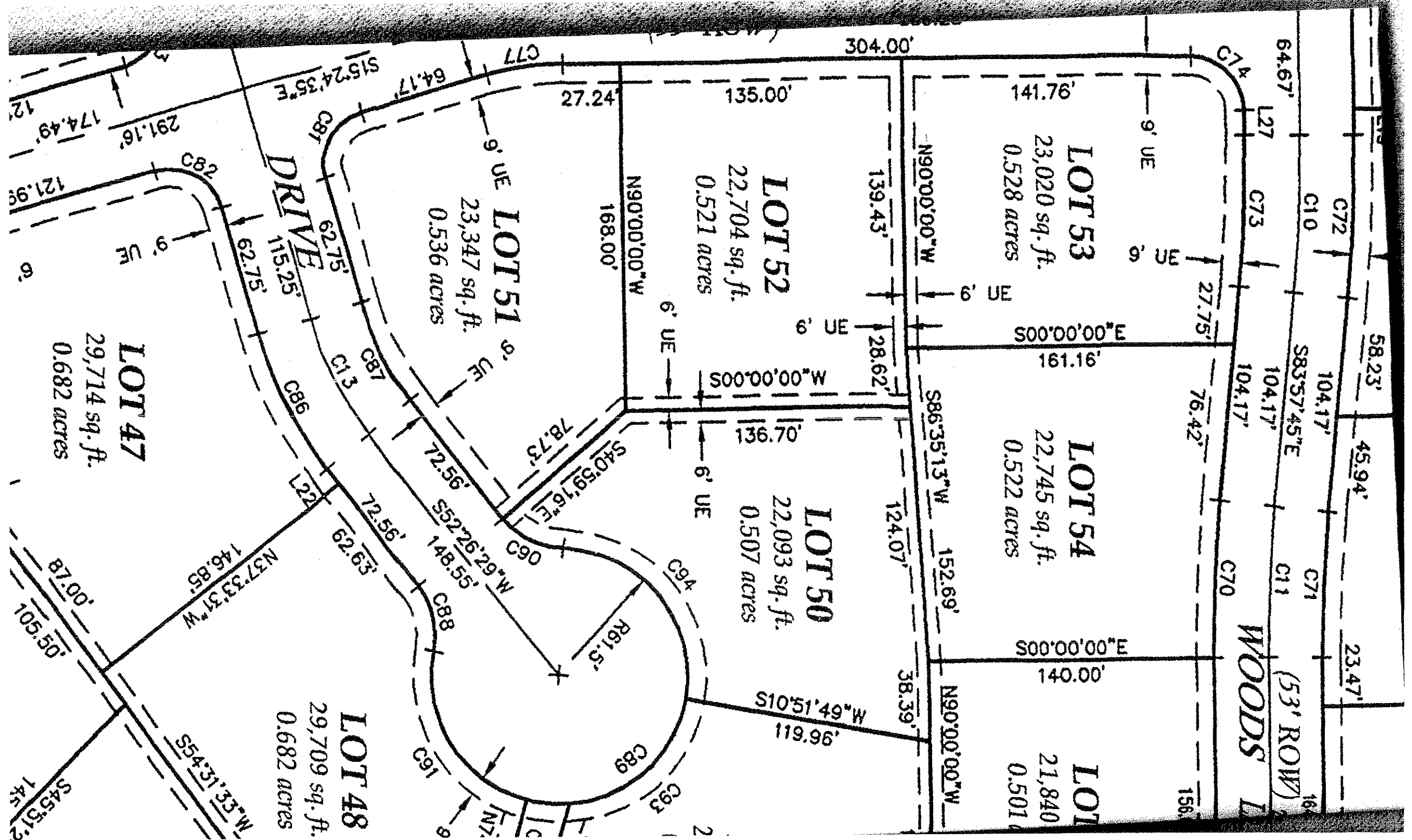
LOT 48
29,709 sq. ft.
0.682 acres

LOT 47
29,714 sq. ft.
0.682 acres

DRIVE

WOODS

(53' ROW)



58.23'

45.94'

23.47'

C72

104.17'

C71

64.67'

S83°57'45"E

C11

L27

C73

104.17'

C70

C74

76.42'

156.00'

9' UE

6' UE

141.76'

23,020 sq. ft.
0.528 acres

S00°00'00"E

161.16'

22,745 sq. ft.
0.522 acres

S00°00'00"E

140.00'

21,840 sq. ft.
0.501 acres

N90°00'00"W

139.43'

28.62'

124.07'

38.39'

S86°35'13"W

152.69'

N90°00'00"W

304.00'

135.00'

136.70'

22,093 sq. ft.
0.507 acres

S10°51'49"W

119.96'

N90°00'00"W

168.00'

6' UE

6' UE

27.24'

9' UE

9' UE

23,347 sq. ft.
0.536 acres

S40°59'16"E

78.73'

72.56'

S52°26'29"W

148.55'

62.75'

62.75'

72.56'

62.63'

29,709 sq. ft.
0.682 acres

115.25'

62.75'

C87

C88

C89

S54°31'33"W

N37°33'31"W

146.85'

87.00'

105.50'

291.16'

9' UE

29,714 sq. ft.
0.682 acres

174.49'

121.99'

6' UE

87.00'

105.50'

S45°31'22"

146.85'

C77

64.17'

9' UE

9' UE

9' UE

C90

N62°26'29"W

148.55'

C89

R61.5'

C93

C94

C95

C96

C97

C98

C99

C100

C101

C102

C103

C104

C105

C106

C107

C108

C109

C110

C111

C112

C113

C114

C115

C116

C117

C118

C119

C120

C121

C122

C123

C124

C125

C126

C127

C128

C129

C130

C131

C132

C133

C134

C135

C136

C137

C138

C139

C140

C141

C142

C143

C144

C145

C146

C147

C148

C149

C150

C151

C152

C153

C154

C155

C156

C157

C158

C159

C160

C161

C162

C163

C164

C165

C166

C167

C168

C169

C170

C171

C172

C173

C174

C175

C176

C177

C178

C179

C180

C181

C182

C183

C184

C185

C186

C187

C188

C189

C190

C191

C192

C193

C194

C195

C196

C197

C198

C199

C200

C201

C202

C203

C204

C205

C206

C207

C208

C209

C210

C211

C212

C213

C214

C215

C216

C217

C218

C219

C220

C221

C222

C223

C224

C225

C226

C227

C228

C229

C230

C231

C232

C233

C234

C235

C236

C237

C238

C239

C240

C241

C242

C243

C244

C245

C246

C247

C248

C249

C250

C251

C252

C253

C254

C255

C256

C257

C258

C259

C260

C261

C262

C263

C264

C265

C266

C267

C268

C269

C270

C271

C272

C273

C274

C275

C276

C277

C278

C279

C280

C281

C282

C283

C284

C285

C286

C287

C288

C289

C290

C291

C292

C293

C294

C295

C296

C297

C298

C299

C300

C301

C302

C303

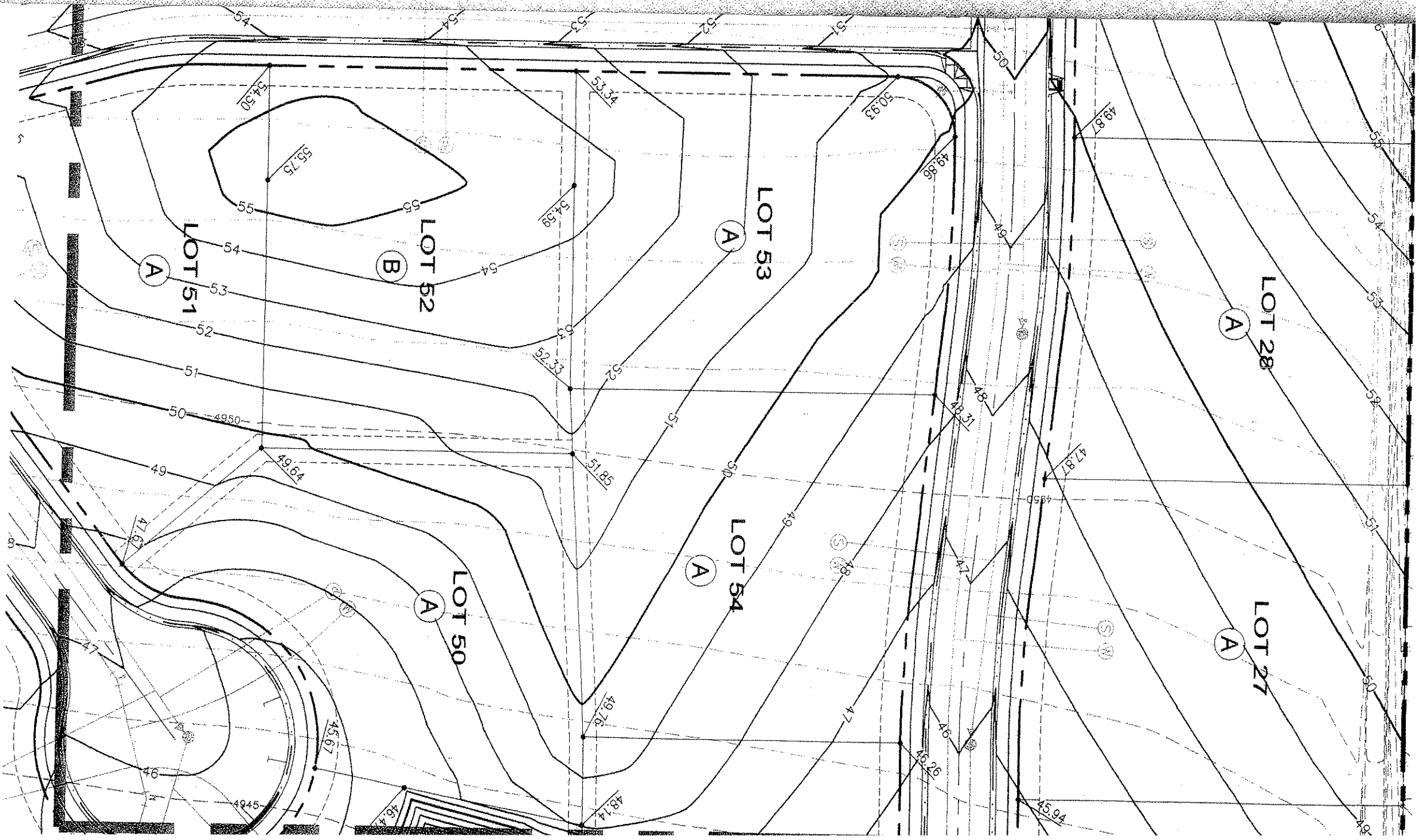
C304

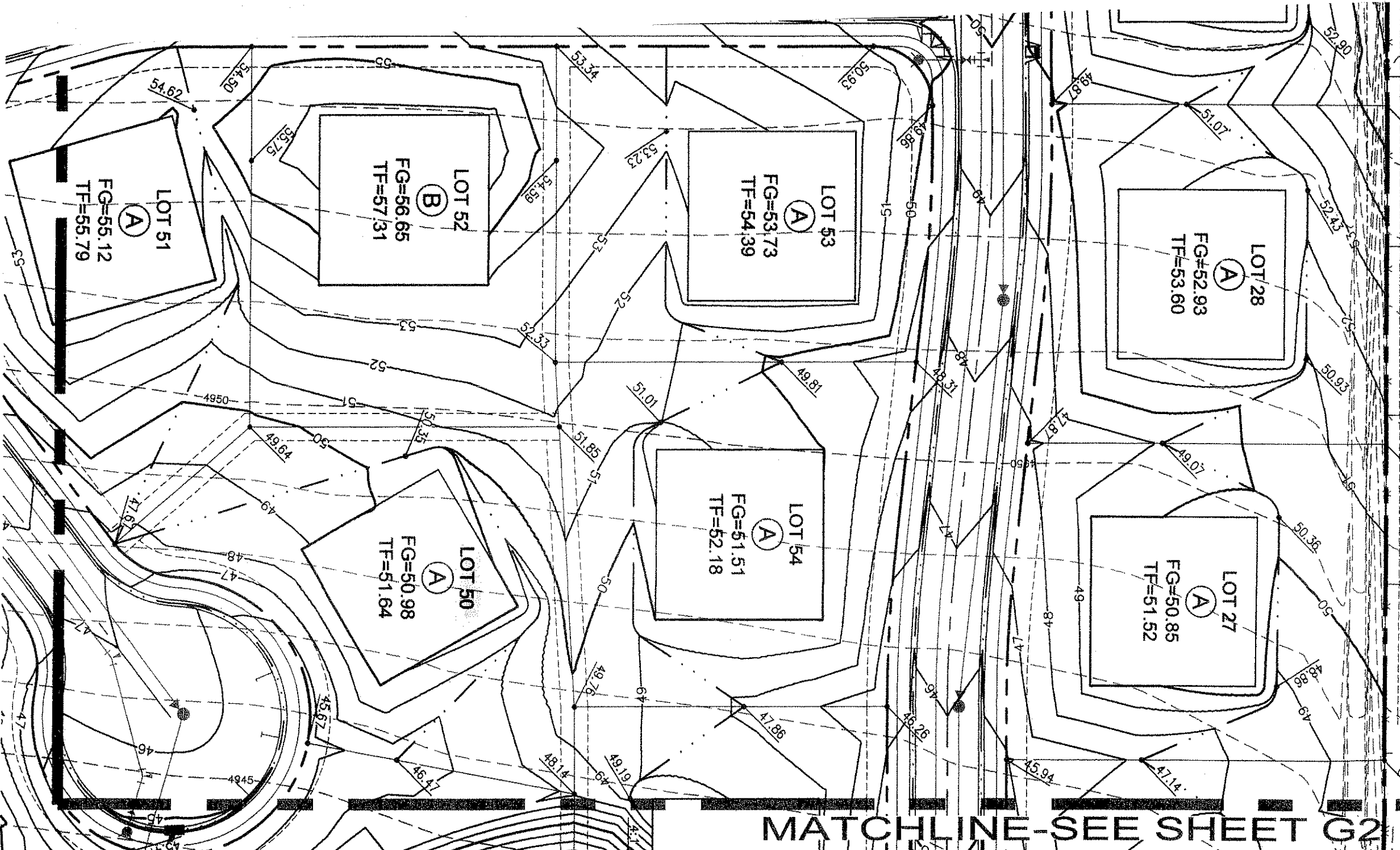
C305

C306

C307

C308





MATCHLINE-SEE SHEET G2

CALL UTILITY NC



CURVE TABLE				
CURVE	LENGTH	RADIUS	DELTA	CH BEARING
C1	157.27	165.00	54°36'38"	N27°13'15"E
C2	48.31	165.00	16°46'36"	S46°08'16"W
C3	150.47	165.00	52°15'02"	N63°52'29"E
C4	63.93	41.00	89°20'08"	S45°19'56"E
C5	42.46	165.00	14°44'43"	N08°02'14"W
C6	44.08	165.00	15°18'28"	S07°45'21"E
C7	64.31	41.00	89°52'12"	S44°49'59"W
C8	44.38	165.00	15°24'35"	S07°42'17"E
C9	44.38	165.00	15°24'35"	N07°42'17"W
C10	76.60	700.00	6°16'10"	N87°05'50"W
C11	73.76	700.00	6°02'15"	S86°58'52"E
C12	44.38	165.00	15°24'35"	N82°17'43"E
C13	63.78	165.00	22°08'56"	N63°30'57"E
C14	36.44	135.50	15°24'35"	N82°17'43"E
C15	51.50	191.50	15°24'35"	N82°17'43"E
C16	40.84	26.00	90°00'00"	N29°35'25"E
C17	40.84	26.00	90°00'00"	N60°24'35"W
C18	40.84	26.00	90°00'00"	S60°24'35"E
C19	40.84	26.00	90°00'00"	S29°35'25"W
C20	35.64	138.50	14°44'43"	N08°02'14"W
C21	49.28	191.50	14°44'43"	N08°02'14"W
C22	14.51	38.50	21°35'33"	N10°07'54"E
C23	174.63	75.50	132°31'14"	S45°19'56"E
C24	14.51	38.50	21°35'33"	S79°12'13"W
C25	40.54	26.00	89°20'08"	S45°19'56"E
C26	14.51	38.50	21°35'33"	S79°26'08"E
C27	175.33	75.50	133°03'18"	S44°49'59"W
C28	14.51	38.50	21°35'33"	N10°53'53"W
C29	40.78	26.00	89°52'12"	S44°49'59"W
C30	37.00	138.50	15°18'28"	S07°45'21"E
C31	51.16	191.50	15°18'28"	S07°45'21"E
C32	85.72	75.50	65°02'53"	S78°50'12"W
C33	89.61	75.50	68°00'25"	S12°18'33"W
C34	8.91	191.50	2°39'59"	N01°59'51"W
C35	6.18	75.50	4°41'21"	N70°45'07"E
C36	14.91	75.50	11°19'06"	S15°16'08"W
C37	83.80	75.50	63°35'30"	S22°11'11"E
C38	69.74	75.50	52°55'17"	S80°26'34"E
C39	40.84	26.00	90°00'00"	N45°00'00"E
C40	40.84	26.00	90°00'00"	S45°00'00"E
C41	174.64	191.50	52°15'02"	N63°52'29"E
C42	126.30	138.50	52°15'02"	N63°52'29"E
C43	48.96	191.50	14°38'54"	N82°40'33"E
C44	107.31	191.50	32°06'22"	N53°48'09"E
C45	40.55	138.50	16°46'36"	S46°08'16"W
C46	56.07	191.50	16°46'36"	S46°08'16"W
C47	21.37	191.50	6°23'34"	S40°56'45"W
C48	34.71	191.50	10°23'02"	S49°20'02"W

CURVE TABLE				
CURVE	LENGTH	RADIUS	DELTA	CH BEARING
C49	182.53	191.50	54°36'38"	N27°13'15"E
C50	132.01	138.50	54°36'38"	N27°13'15"E
C51	51.97	191.50	15°33'02"	N46°45'03"E
C52	83.50	191.45	24°59'21"	N26°28'57"E
C53	47.05	191.33	14°05'22"	N06°57'24"E
C54	18.37	191.50	5°29'46"	N72°36'13"E
C55	94.86	138.50	39°14'33"	N34°54'17"E
C56	37.15	138.50	15°22'05"	N07°35'58"E
C57	40.80	26.00	89°54'56"	N45°02'32"W
C58	40.88	26.00	90°05'04"	S44°57'28"W
C59	33.23	38.50	49°27'30"	N65°16'15"W
C60	299.38	61.50	278°55'00"	N00°00'00"E
C61	33.23	38.50	49°27'30"	N65°16'15"E
C62	13.79	61.50	12°50'57"	S46°57'58"E
C63	90.31	61.50	84°08'00"	S46°57'58"E
C64	36.03	61.50	33°33'58"	N25°41'34"E
C65	56.37	61.50	52°31'07"	N17°20'58"W
C66	76.80	61.50	71°33'10"	N79°23'06"W
C67	26.08	61.50	24°17'49"	S52°41'24"W
C68	40.84	26.00	90°00'11"	S44°59'54"E
C69	40.84	26.00	89°59'49"	N45°00'06"E
C70	76.55	726.50	6°02'15"	S86°58'52"E
C71	70.97	673.50	8°02'15"	S86°58'52"E
C72	79.50	726.50	6°16'10"	N87°05'50"W
C73	73.70	673.50	6°16'10"	N87°05'50"W
C74	40.74	26.00	89°46'05"	S44°53'03"W
C75	40.95	26.00	90°13'55"	N45°06'57"W
C76	51.50	191.50	15°24'35"	S07°42'17"E
C77	37.25	138.50	15°24'35"	S07°42'17"E
C78	44.10	191.50	13°11'44"	S08°48'43"E
C79	7.40	191.50	2°12'51"	S01°06'25"E
C80	40.84	26.00	90°00'00"	N29°35'25"E
C81	40.84	26.00	90°00'00"	S60°24'35"E
C82	40.84	26.00	90°00'00"	S29°35'25"W
C83	40.84	26.00	90°00'00"	N60°24'35"W
C84	51.50	191.50	15°24'35"	N07°42'17"W
C85	37.25	138.50	15°24'35"	N07°42'17"W
C86	74.03	191.50	22°08'56"	N63°30'57"E
C87	53.54	138.50	22°08'56"	N63°30'57"E
C88	33.23	38.50	49°27'30"	S77°10'14"W
C89	299.40	61.50	278°55'00"	N37°33'31"W
C90	33.23	38.50	49°27'30"	N27°42'44"E
C91	93.02	61.50	86°39'14"	N58°34'22"E
C92	20.37	61.50	18°58'36"	N05°45'27"E
C93	80.94	61.50	75°24'20"	N41°26'01"W
C94	105.07	61.50	97°52'50"	S51°55'24"W
C95	40.37	191.50	12°04'44"	N09°22'13"W
C96	2.53	26.00	5°34'05"	N71°48'22"E

LINE TABLE		
LINE	BEARING	LENGTH
L1	S15°58'23"E	146.77
L2	S15°09'52"W	147.04
L3	S47°46'43"W	104.49
L4	S00°10'42"W	83.04
L5	S04°53'23"E	148.97
L6	S26°38'42"W	122.90
L7	N81°09'21"W	85.74
L8	N76°39'20"W	28.48
L9	N89°53'53"E	26.42
L10	N75°38'28"E	38.86
L11	N62°14'52"E	23.49
L12	N54°19'44"E	15.92
L13	N42°02'42"E	17.24
L14	N03°58'37"E	24.83
L15	S74°35'25"W	17.12
L16	N15°24'35"W	11.00
L17	N00°53'36"E	4.45
L18	S37°38'30"E	6.37
L19	N89°46'05"E	12.74
L20	N89°46'05"E	17.84
L21	S62°15'02"E	38.36
L22	S52°26'39"W	9.93
L23	N74°35'25"E	17.12
L24	N90°00'00"W	14.03
L25	S00°06'07"E	29.50
L26	S00°06'07"E	29.50
L27	N89°46'05"E	12.38
L28	S15°24'35"E	12.98
L29	S00°06'07"E	10.62
L30	N90°00'00"E	17.78
L31	S74°16'32"W	20.21
L32	N64°04'44"E	24.90
L33	S90°00'00"E	49.52
L34	N76°23'28"W	20.26
L35	S85°54'16"E	19.36
L36	N75°30'38"W	17.68
L37	S67°22'50"E	31.04
L38	S90°00'00"E	42.20
L39	S53°07'35"W	27.15
L40	N60°30'12"E	16.79