

# Lemay Avenue

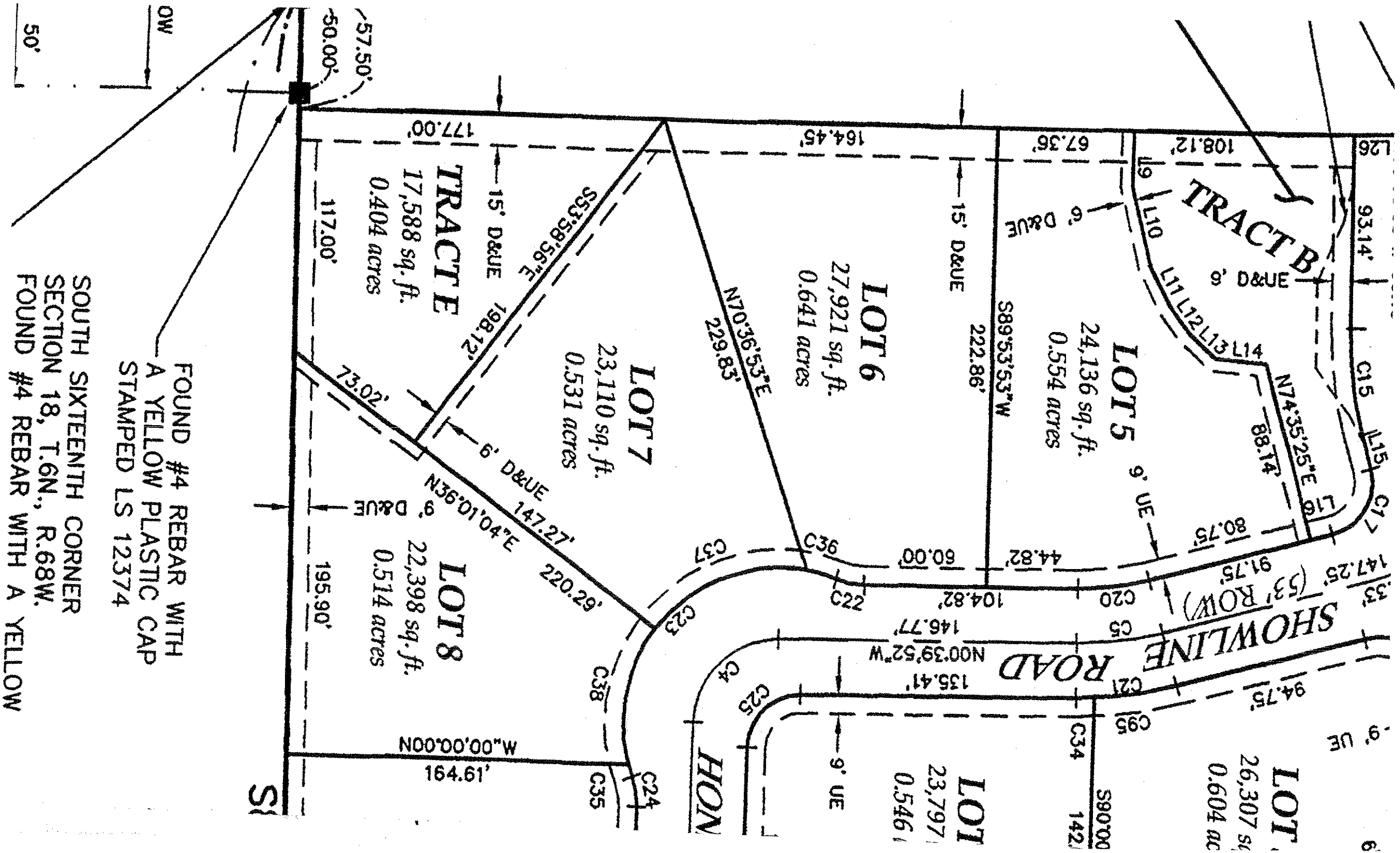
## ESTATES

LOTS

PLAT DOCUMENTS

**INCLUDE:**

- 1) Dimensional Plat
- 2) Grading Plat
- 3) Top Of Foundation Plat
- 4) Curve & Line Table
- ~~5) Street Plat~~
- ~~6) Street Plat~~
- ~~7) Street Plat~~



**LOT 1**  
26,307 sq.  
0.604 ac

**LOT 1**  
23,797  
0.546 ac

**LOTS 5**  
24,136 sq. ft.  
0.554 acres

**LOT 6**  
27,921 sq. ft.  
0.641 acres

**LOT 7**  
23,110 sq. ft.  
0.531 acres

**LOT 8**  
22,398 sq. ft.  
0.514 acres

**TRACT A**  
17,588 sq. ft.  
0.404 acres

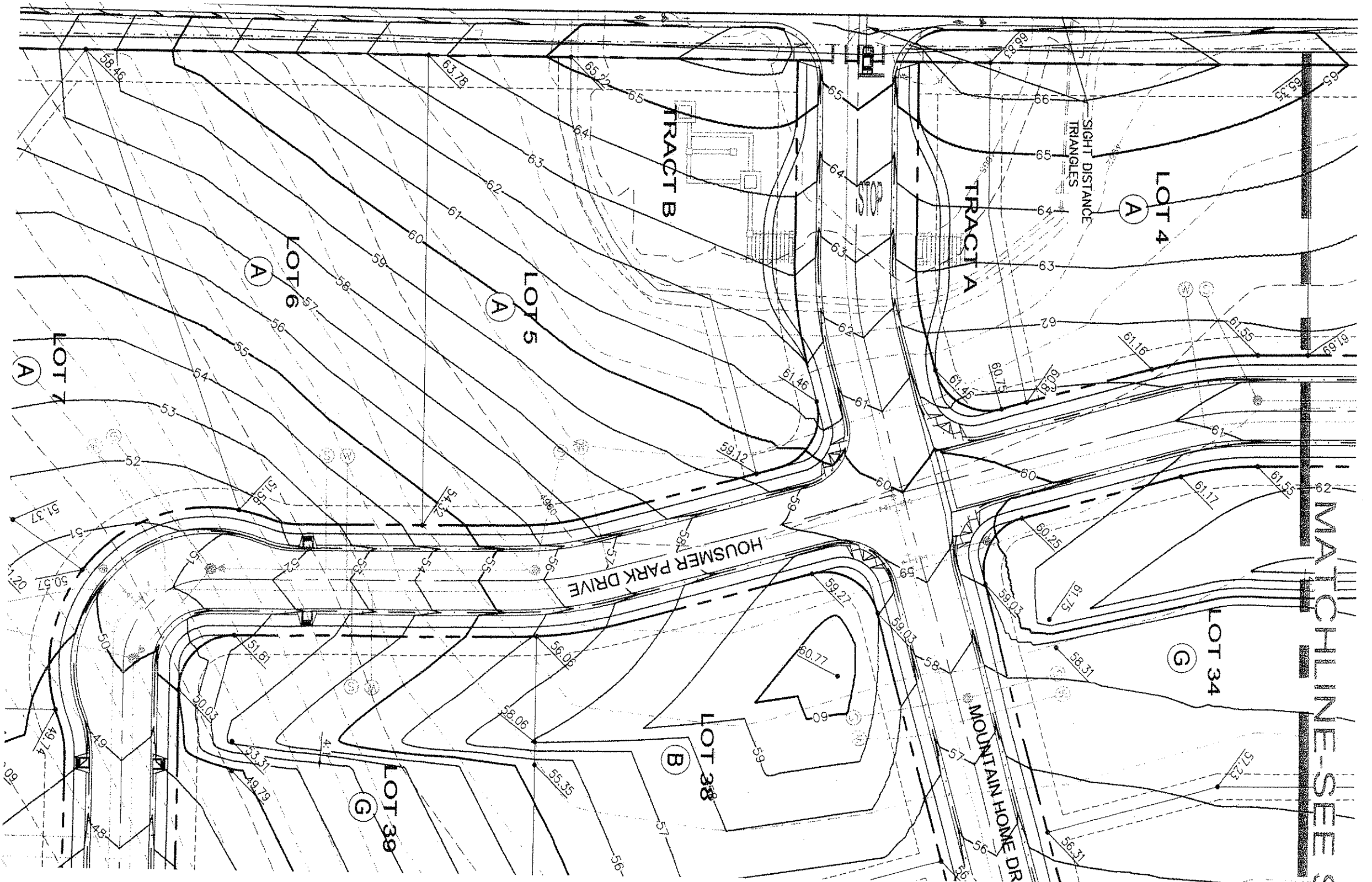
**TRACT B**

SOUTH SIXTEENTH CORNER  
SECTION 18, T.6N., R.68W.  
FOUND #4 REBAR WITH A YELLOW  
FOUND #4 REBAR WITH A YELLOW  
FOUND #4 REBAR WITH  
A YELLOW PLASTIC CAP  
STAMPED LS 12374

50'

OW

S



MATCHLINE-SEES

LOT 4

(A)

SIGHT DISTANCE TRIANGLES

TRACT A

TRACT B

LOT 5

(A)

LOT 6

(A)

LOT 7

(A)

LOT 34

(G)

LOT 38

(B)

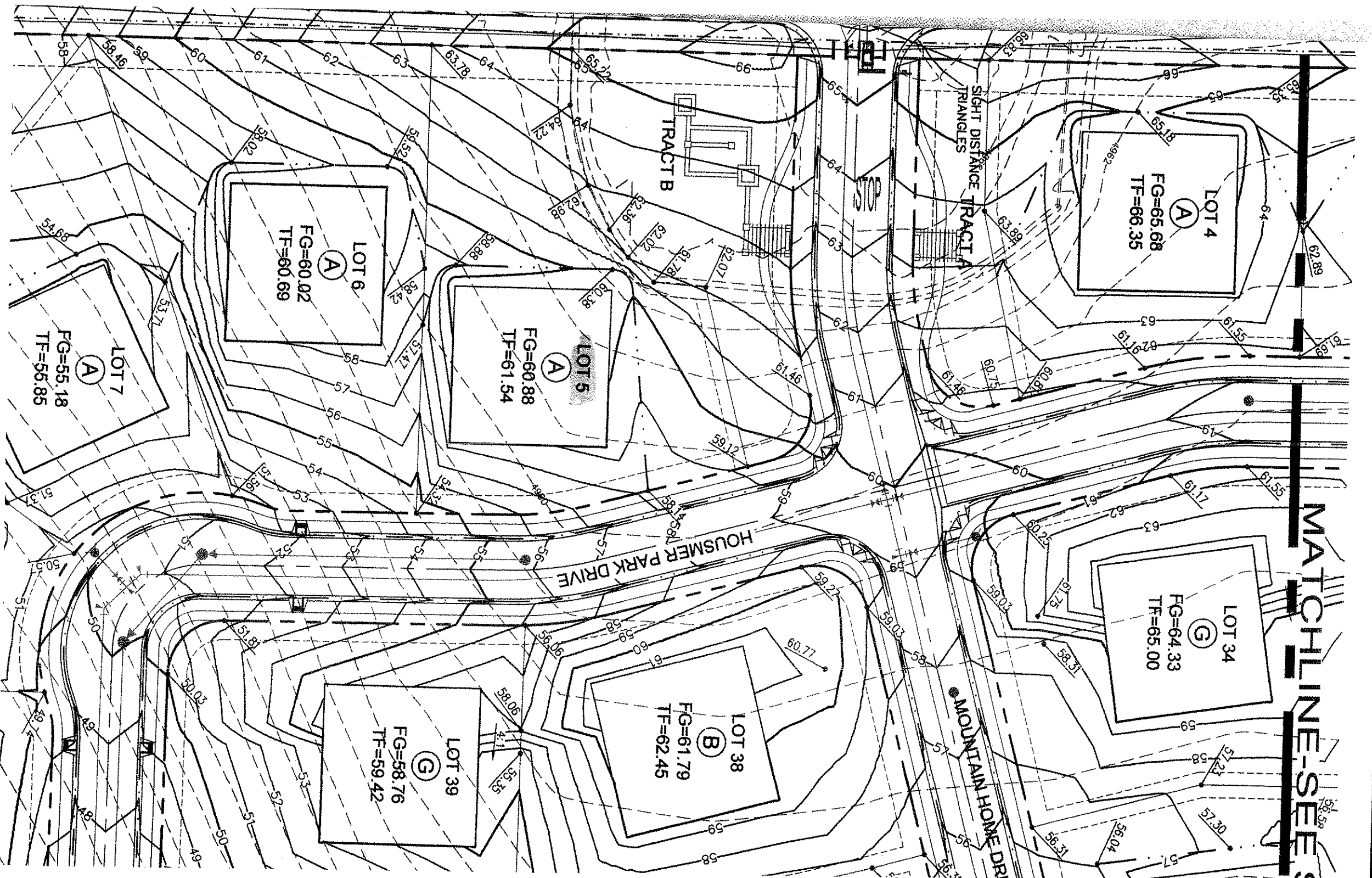
LOT 39

(G)

HOUSMER PARK DRIVE

MOUNTAIN HOME DR

STOP



MATCHLINE-SEE

SIGHT DISTANCE TRIANGLES

STOP

HOUSMER PARK DRIVE

MOUNTAIN HOME DRI

LOT 4

FG=65.68  
TF=66.35

LOT 5

FG=60.88  
TF=61.54

LOT 6

FG=60.02  
TF=60.69

LOT 7

FG=55.18  
TF=55.85

LOT 34

FG=64.33  
TF=65.00

LOT 38

FG=61.79  
TF=62.45

LOT 39

FG=58.76  
TF=59.42

CURVE TABLE				
CURVE	LENGTH	RADIUS	DELTA	CH BEARING
C1	157.27"	165.00"	54°36'38"	N27°13'15"E
C2	48.31"	165.00"	16°46'36"	S46°08'16"W
C3	150.47"	165.00"	52°15'02"	N63°52'29"E
C4	63.93"	41.00"	89°20'08"	S45°19'56"E
C5	42.46"	165.00"	14°44'43"	N08°02'14"W
C6	44.38"	165.00"	15°18'28"	S07°45'21"E
C7	64.31"	41.00"	89°52'12"	S44°49'59"W
C8	44.38"	165.00"	15°24'35"	N07°42'17"E
C9	44.38"	165.00"	15°24'35"	N07°42'17"E
C10	76.60"	700.00"	6°16'10"	N87°05'50"W
C11	73.76"	700.00"	6°02'15"	S86°58'52"E
C12	44.38"	165.00"	15°24'35"	N82°17'43"E
C13	63.78"	165.00"	22°08'56"	N63°30'57"E
C14	36.44"	135.50"	15°24'35"	N82°17'43"E
C15	51.50"	191.50"	15°24'35"	N29°35'25"E
C16	40.84"	26.00"	90°00'00"	S60°24'35"E
C17	40.84"	26.00"	90°00'00"	S60°24'35"E
C18	40.84"	26.00"	90°00'00"	S29°35'25"W
C19	40.84"	26.00"	90°00'00"	S29°35'25"W
C20	35.64"	138.50"	14°44'43"	N08°02'14"W
C21	49.28"	191.50"	14°44'43"	N08°02'14"W
C22	14.51"	38.50"	21°35'33"	N10°07'54"E
C23	174.63"	75.50"	132°31'14"	S45°19'56"E
C24	14.51"	38.50"	21°35'33"	N10°07'54"E
C25	40.54"	26.00"	89°20'08"	S45°19'56"E
C26	14.51"	38.50"	21°35'33"	S79°26'08"E
C27	175.53"	75.50"	133°03'18"	S44°49'59"W
C28	14.51"	38.50"	21°35'33"	N10°07'54"E
C29	40.78"	26.00"	89°52'12"	S44°49'59"W
C30	37.00"	138.50"	15°18'28"	S07°45'21"E
C31	51.16"	191.50"	15°18'28"	S07°45'21"E
C32	85.72"	75.50"	65°02'53"	S75°50'12"W
C33	89.61"	75.50"	68°00'25"	S12°18'33"W
C34	8.91"	191.50"	2°39'59"	N01°59'51"W
C35	6.18"	75.50"	4°41'21"	N70°45'07"E
C36	14.91"	75.50"	11°19'06"	S15°16'08"W
C37	83.80"	75.50"	63°35'30"	S22°11'11"E
C38	69.74"	75.50"	52°55'17"	S80°26'34"E
C39	40.84"	26.00"	90°00'00"	S45°00'00"E
C40	40.84"	26.00"	90°00'00"	S45°00'00"E
C41	174.64"	191.50"	52°15'02"	N63°52'29"E
C42	126.30"	138.50"	52°15'02"	N63°52'29"E
C43	48.96"	191.50"	14°38'54"	N82°40'33"E
C44	107.31"	191.50"	32°06'22"	N53°48'09"E
C45	40.55"	138.50"	16°46'36"	S46°08'16"W
C46	56.07"	191.50"	16°46'36"	S46°08'16"W
C47	21.37"	191.50"	6°23'34"	S40°56'45"W
C48	34.71"	191.50"	10°23'02"	S49°20'02"W

CURVE TABLE				
CURVE	LENGTH	RADIUS	DELTA	CH BEARING
C49	182.53"	191.50"	54°36'38"	N27°13'15"E
C50	132.01"	138.50"	54°36'38"	N27°13'15"E
C51	51.97"	191.50"	15°33'02"	N46°45'03"E
C52	83.50"	191.45"	24°59'21"	N26°28'57"E
C53	47.05"	191.33"	14°05'22"	N06°57'24"E
C54	18.37"	191.50"	5°29'46"	N72°36'13"E
C55	94.86"	138.50"	39°14'33"	N34°54'17"E
C56	37.15"	138.50"	15°22'05"	N07°35'58"E
C57	40.80"	26.00"	89°54'56"	N45°02'32"W
C58	40.88"	26.00"	90°05'04"	N45°02'32"W
C59	33.23"	38.50"	49°27'30"	S44°57'28"W
C60	299.38"	61.50"	278°55'00"	N00°00'00"E
C61	33.23"	38.50"	49°27'30"	N65°16'15"E
C62	13.79"	61.50"	12°50'57"	S46°57'58"E
C63	90.31"	61.50"	84°08'00"	S46°32'33"E
C64	36.03"	61.50"	33°33'58"	N25°41'34"E
C65	56.37"	61.50"	52°31'07"	N17°20'58"W
C66	76.80"	61.50"	71°33'10"	N79°23'06"W
C67	26.08"	61.50"	24°17'49"	S52°41'24"W
C68	40.84"	26.00"	90°00'11"	S44°59'54"E
C69	40.84"	26.00"	89°59'49"	N45°00'06"E
C70	76.55"	726.50"	6°02'15"	S86°58'52"E
C71	70.97"	673.50"	6°02'15"	S86°58'52"E
C72	79.50"	726.50"	6°16'10"	N87°05'50"W
C73	73.70"	673.50"	6°16'10"	N87°05'50"W
C74	40.74"	26.00"	89°46'05"	N87°05'50"W
C75	40.95"	26.00"	90°13'55"	N45°06'57"W
C76	51.50"	191.50"	15°24'35"	S07°42'17"E
C77	37.25"	138.50"	15°24'35"	S07°42'17"E
C78	44.10"	191.50"	13°11'44"	S08°48'43"E
C79	7.40"	191.50"	2°12'51"	S01°06'25"E
C80	40.84"	26.00"	90°00'00"	S29°35'25"E
C81	40.84"	26.00"	90°00'00"	S29°35'25"E
C82	40.84"	26.00"	90°00'00"	S29°35'25"W
C83	40.84"	26.00"	90°00'00"	S29°35'25"W
C84	51.50"	191.50"	15°24'35"	N07°42'17"W
C85	37.25"	138.50"	15°24'35"	N07°42'17"W
C86	74.03"	191.50"	22°08'56"	N63°30'57"E
C87	53.54"	138.50"	22°08'56"	N63°30'57"E
C88	33.23"	38.50"	49°27'30"	S77°10'14"W
C89	299.40"	61.50"	278°55'00"	N37°33'31"W
C90	33.23"	38.50"	49°27'30"	N27°42'44"E
C91	93.02"	61.50"	86°39'14"	N58°34'22"E
C92	20.37"	61.50"	18°58'36"	N05°45'27"E
C93	80.94"	61.50"	75°24'20"	N41°26'01"W
C94	105.07"	61.50"	97°52'50"	S61°55'24"W
C95	40.37"	191.50"	12°04'44"	N09°22'13"W
C96	2.53"	26.00"	5°34'05"	N71°48'22"E

LINE TABLE		
LINE	BEARING	LENGTH
L1	S15°58'23"E	146.77'
L2	S15°09'52"W	147.04'
L3	S47°46'43"W	104.49'
L4	S00°10'42"W	83.04'
L5	S04°53'23"E	148.97'
L6	S26°38'42"W	122.90'
L7	N81°09'21"W	85.74'
L8	N76°39'20"W	28.48'
L9	N89°53'53"E	26.42'
L10	N75°38'28"E	38.86'
L11	N62°14'52"E	23.49'
L12	N54°19'44"E	15.92'
L13	N42°02'42"E	17.24'
L14	N03°58'37"E	24.83'
L15	S74°35'25"W	17.12'
L16	N15°24'35"W	11.00'
L17	N00°53'36"E	4.45'
L18	S37°38'30"E	6.37'
L19	N89°46'05"E	12.74'
L20	N89°46'05"E	17.84'
L21	S52°26'39"E	38.36'
L22	S52°26'39"W	9.93'
L23	N74°35'25"E	17.12'
L24	N90°00'00"W	14.03'
L25	S00°06'07"E	29.50'
L26	S00°06'07"E	29.50'
L27	N89°46'05"E	12.38'
L28	S15°24'35"E	12.98'
L29	S00°06'07"E	10.62'
L30	N90°00'00"E	17.78'
L31	S74°16'32"W	20.21'
L32	N64°04'44"E	24.90'
L33	S90°00'00"E	49.52'
L34	N76°23'28"W	20.26'
L35	S85°54'16"E	19.36'
L36	N75°30'38"W	17.68'
L37	S67°22'50"E	31.04'
L38	S90°00'00"E	42.20'
L39	S53°07'35"W	27.15'
L40	N60°30'12"E	16.79'