

Lemay Avenue

ESTATES

LOT 1

PLAT DOCUMENTS

INCLUDE:

- 1) Dimensional Plat
- 2) Grading Plat
- 3) Top Of Foundation Plat
- 4) Curve & Line Table



W. 10

1549.59

LEMAY AVENUE

PROPOSED DEDICATED ROW
77,592 sq. ft., 1.781 acres

154.27
S00°06'07"E

LOT 4
21,781 sq. ft.
0.500 acres

S90°00'00"E
137.50'

LOT 3
21,780 sq. ft.
0.500 acres

S90°00'00"W
137.50'

LOT 2
21,860 sq. ft.
0.502 acres

S90°00'00"E
137.50'

LOT 1
21,780 sq. ft.
0.500 acres

15' D&UE

N90°00'00"W
97.87'

LOT 31
23,668 sq. ft.
0.543 acres

6' D&UE

SHOWLINE ROAD

(53' ROW)

N00°06'07"W
382.90'

52.93'

N90°00'00"E
152.00'

LOT 33
28,120 sq. ft.
0.646 acres

9' UE

S90°00'00"W
152.00'

LOT 32
25,880 sq. ft.
0.594 acres

9' UE

9' UE

LOT 34
25,678 sq. ft.
0.589 acres

6' UE

E.00°00'00"S
149.07'

9' UE

21

E.00°00'00"N
103.32'

166.85'

9' D&UE

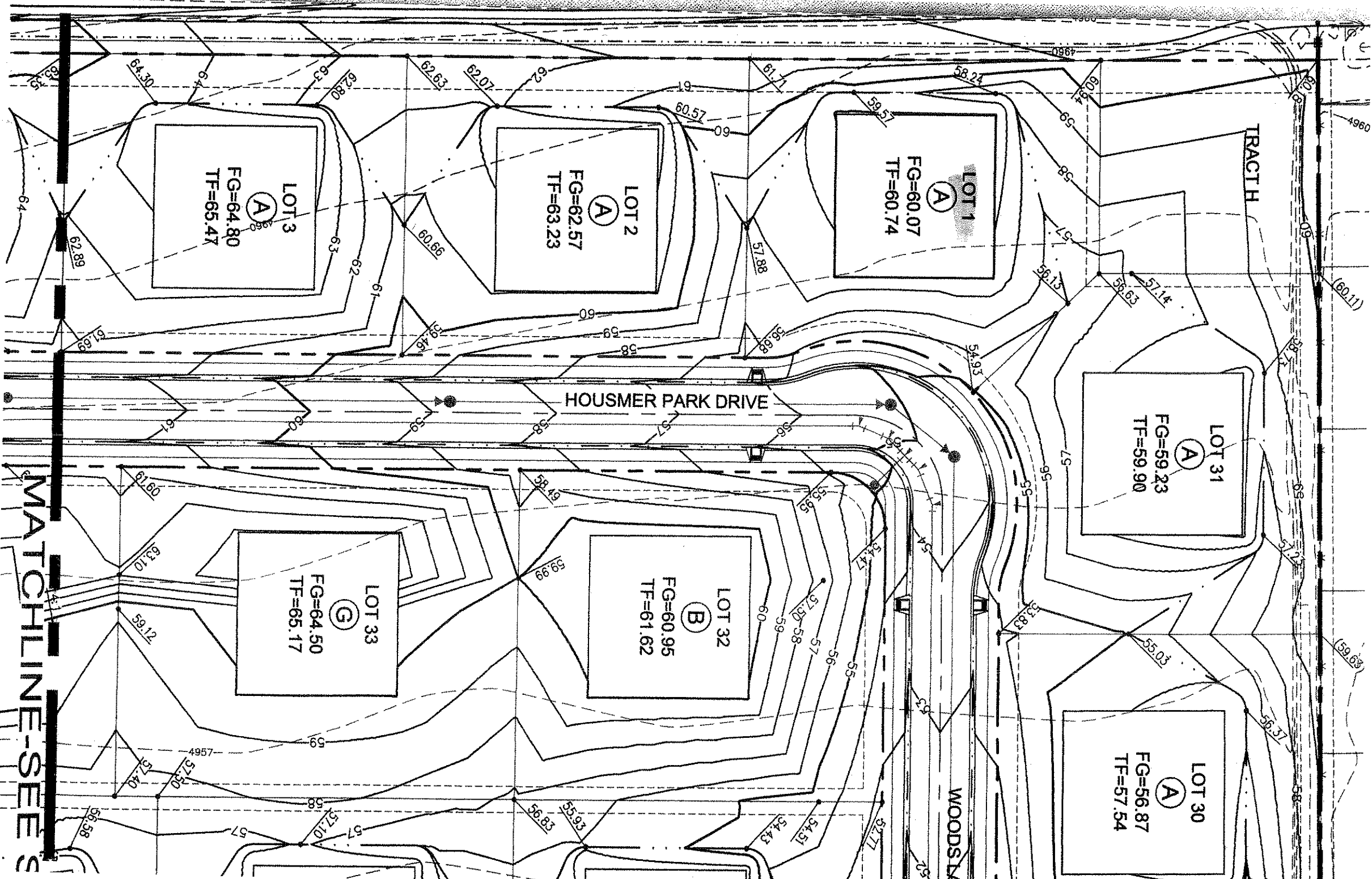
102.66'

98.06'

TRACTH

49.82'
57.50'

5



TRACT H

HOUSMER PARK DRIVE

WOODS LA

MATCHLINE-SEES

LOT 1
A
FG=60.07
TF=60.74

LOT 2
A
FG=62.57
TF=63.23

LOT 3
A
FG=64.80
TF=65.47

LOT 31
A
FG=59.23
TF=59.90

LOT 32
B
FG=60.95
TF=61.62

LOT 33
C
FG=64.50
TF=65.17

LOT 30
A
FG=56.87
TF=57.54

CURVE TABLE				
CH BEARING	CURVE LENGTH	RADIUS	DELTA	CHORD
C1	157.27'	165.00'	54°36'38"	151.38'
C2	48.31'	165.00'	16°46'36"	48.14'
C3	150.47'	165.00'	52°15'02"	145.31'
C4	63.93'	41.00'	89°20'08"	57.65'
C5	42.46'	165.00'	14°44'43"	42.35'
C6	44.08'	165.00'	15°18'28"	43.95'
C7	64.31'	41.00'	89°52'12"	44.22'
C8	44.38'	165.00'	15°24'35"	44.24'
C9	44.38'	165.00'	15°24'35"	44.24'
C10	76.60'	700.00'	6°16'10"	76.56'
C11	73.76'	700.00'	6°02'15"	73.73'
C12	44.38'	165.00'	15°24'35"	44.24'
C13	63.78'	165.00'	22°08'56"	63.39'
C14	36.44'	135.50'	15°24'35"	36.33'
C15	51.50'	191.50'	15°24'35"	51.35'
C16	40.84'	26.00'	90°00'00"	36.77'
C17	40.84'	26.00'	90°00'00"	36.77'
C18	40.84'	26.00'	90°00'00"	36.77'
C19	40.84'	26.00'	90°00'00"	36.77'
C20	35.64'	138.50'	14°44'43"	35.55'
C21	49.28'	191.50'	14°44'43"	49.15'
C22	14.51'	38.50'	21°35'33"	14.42'
C23	174.63'	75.50'	132°31'14"	138.22'
C24	14.51'	38.50'	21°35'33"	14.42'
C25	40.54'	26.00'	89°20'08"	36.56'
C26	14.51'	38.50'	21°35'33"	14.42'
C27	175.33'	75.50'	133°03'18"	138.50'
C28	14.51'	38.50'	21°35'33"	14.42'
C29	40.78'	26.00'	89°52'12"	36.73'
C30	37.00'	138.50'	15°18'28"	36.89'
C31	51.16'	191.50'	15°18'28"	51.01'
C32	85.72'	75.50'	65°02'53"	81.19'
C33	89.61'	75.50'	68°00'25"	84.45'
C34	8.91'	191.50'	2°39'59"	8.91'
C35	6.18'	75.50'	4°41'21"	6.18'
C36	14.91'	75.50'	11°18'06"	14.89'
C37	83.80'	75.50'	63°35'30"	79.56'
C38	69.74'	75.50'	52°55'17"	67.28'
C39	40.84'	26.00'	90°00'00"	36.77'
C40	40.84'	26.00'	90°00'00"	36.77'
C41	174.64'	191.50'	52°15'02"	168.65'
C42	126.30'	138.50'	52°15'02"	121.97'
C43	48.96'	191.50'	14°38'54"	48.83'
C44	107.31'	191.50'	32°06'22"	105.91'
C45	40.55'	138.50'	16°46'36"	40.41'
C46	56.07'	191.50'	16°46'36"	55.87'
C47	21.37'	191.50'	6°23'34"	21.36'
C48	34.71'	191.50'	10°23'02"	34.66'
S492°02'W				

CURVE TABLE				
CH BEARING	CURVE LENGTH	RADIUS	DELTA	CHORD
C49	182.53'	191.50'	54°36'38"	175.69'
C50	132.01'	138.50'	54°36'38"	127.07'
C51	51.97'	191.50'	15°33'02"	51.81'
C52	83.50'	191.45'	24°59'21"	82.84'
C53	47.05'	191.33'	14°05'22"	46.93'
C54	18.37'	191.50'	5°29'46"	18.36'
C55	94.86'	138.50'	39°14'33"	93.02'
C56	37.15'	138.50'	15°22'05"	37.04'
C57	40.80'	26.00'	89°54'56"	36.74'
C58	40.88'	26.00'	90°05'04"	36.80'
C59	33.23'	38.50'	49°27'30"	32.21'
C60	299.38'	61.50'	278°55'00"	79.95'
C61	33.23'	38.50'	49°27'30"	32.21'
C62	13.79'	61.50'	12°50'57"	13.76'
C63	90.31'	61.50'	84°08'00"	82.41'
C64	56.03'	61.50'	33°33'58"	35.52'
C65	56.37'	61.50'	52°31'07"	54.42'
C66	76.80'	61.50'	71°33'10"	71.91'
C67	26.08'	61.50'	24°17'49"	25.88'
C68	40.84'	26.00'	90°00'11"	36.77'
C69	40.84'	26.00'	89°59'49"	36.77'
C70	76.55'	726.50'	6°02'15"	76.52'
C71	70.97'	673.50'	6°02'15"	70.94'
C72	726.50'	726.50'	6°16'10"	79.46'
C73	73.70'	673.50'	6°16'10"	73.66'
C74	40.74'	26.00'	89°46'05"	36.70'
C75	40.95'	26.00'	90°13'55"	36.84'
C76	51.50'	191.50'	15°24'35"	51.35'
C77	37.25'	138.50'	15°24'35"	37.14'
C78	44.10'	191.50'	13°11'44"	44.01'
C79	7.40'	191.50'	2°12'51"	7.40'
C80	40.84'	26.00'	90°00'00"	36.77'
C81	40.84'	26.00'	90°00'00"	36.77'
C82	40.84'	26.00'	90°00'00"	36.77'
C83	40.84'	26.00'	90°00'00"	36.77'
C84	51.50'	191.50'	15°24'35"	51.35'
C85	37.25'	138.50'	15°24'35"	37.14'
C86	74.03'	191.50'	22°08'56"	73.57'
C87	53.54'	138.50'	22°08'56"	53.21'
C88	33.23'	38.50'	49°27'30"	32.21'
C89	299.40'	61.50'	278°55'00"	79.95'
C90	33.23'	38.50'	49°27'30"	32.21'
C91	93.02'	61.50'	86°39'14"	84.40'
C92	20.37'	61.50'	18°58'36"	20.28'
C93	80.94'	61.50'	75°24'20"	75.23'
C94	105.07'	61.50'	97°52'50"	92.75'
C95	40.37'	191.50'	12°04'44"	40.30'
C96	2.53'	26.00'	5°34'05"	2.53'
N2713°15'E				

LINE TABLE		
LINE	BEARING	LENGTH
L1	S15°58'23"E	146.77'
L2	S15°09'52"W	147.04'
L3	S47°46'43"W	104.49'
L4	S00°10'42"W	83.04'
L5	S04°53'23"E	148.97'
L6	S26°38'42"W	122.90'
L7	N81°09'21"W	85.74'
L8	N76°39'20"W	28.48'
L9	N89°53'53"E	26.42'
L10	N75°38'28"E	38.86'
L11	N62°14'52"E	23.49'
L12	N54°19'44"E	15.92'
L13	N42°02'42"E	17.24'
L14	N03°58'37"E	24.83'
L15	S74°35'25"W	17.12'
L16	N15°24'35"W	11.00'
L17	N00°53'36"E	4.45'
L18	S37°38'30"E	6.37'
L19	N89°46'05"E	12.74'
L20	N89°46'05"E	17.84'
L21	S52°15'02"E	38.36'
L22	S52°26'39"W	9.93'
L23	N74°35'25"E	17.12'
L24	N90°00'00"W	14.03'
L25	S00°06'07"E	29.50'
L26	S00°06'07"E	29.50'
L27	N89°46'05"E	12.38'
L28	S15°24'35"E	12.98'
L29	S00°06'07"E	10.62'
L30	N90°00'00"E	17.78'
L31	S74°16'32"W	20.21'
L32	N64°04'44"E	24.90'
L33	S90°00'00"E	49.52'
L34	N76°23'28"W	20.26'
L35	S85°54'16"E	19.36'
L36	N75°30'38"W	17.68'
L37	S67°22'50"E	31.04'
L38	S90°00'00"E	42.20'
L39	S53°07'35"W	27.15'
L40	N60°30'12"E	16.79'